

RF SPEC.

Frequency Range:0.1-1GHZ

Impedance: 50 ohm

Insertion Loss<0.8dB(Typical)

VSWR<1.25

Isolation>30dB(Typical)

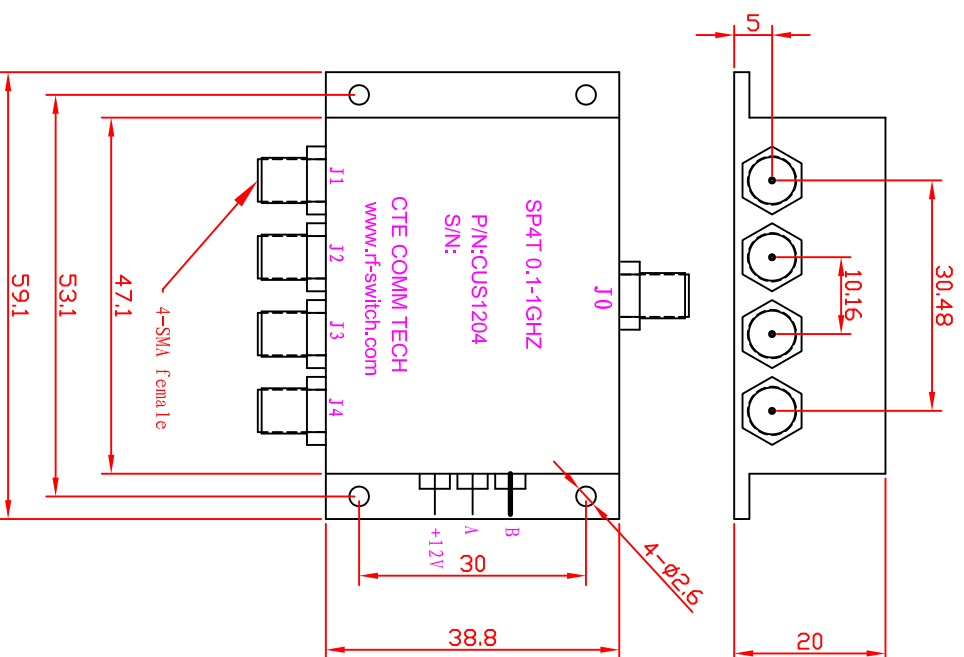
Power Handling:2W

Switching Time: <2us

Operating Voltage:DC12V+3/-3V / 1mA

RF Interface:SMA feamle

Control IN:Solder Pins



Logic Control

A	B	
0V	0V	J0-J1
0V	+12V	J0-J2
+12V	+12V	J0-J3
+12V	0V	J0-J4

SP4T 0.1-1GHZ 50 ohm SMA female				材料
阶段标记 比例 视图方向				产品号 CUS1204
A	B	C	1:1	图号
共 1 张 第 1 张 版次				1
北京亿迈通信技术有限公司 Beijing CTE Communication				